



www.wellpro.com

WMCK & WSMCK

PITLESS KITS

CLEAR WELL PITLESS KITS

- A** Support Bar
WSMCK4SB, WSMCK5SB,
WSMCK6SB
- B** Stainless Steel Screw
WSMCKSS
- C** Internal Pitless Body
WSMCKB410, 414, 510, 514, 610, 614
- D** Stainless Steel Pivot Pin
WMCKPP
- E** Flipper
WSMCKF400, 500, 600
- F** O-Ring Seal
WMCKOR
- G** Discharge Hub with O-Ring
WSMCKH410, 414, 510, 514, 610, 614
- H** Stainless Steel U-Strap
WUS4SS, WUS5SS, WUS6SS

WSMCK Pitless Kits



*The Water Well
Products
used by
PROFESSIONALS*



"For Steel or Plastic Well Casings"



CONTACT INFO:

Main/International:(712) 732-7354
 U.S. and Iowa:(877) 888-7059
 Fax:(712) 732-7568
 Fax:(800) 269-3569

Installation Instructions

1. Cut and thread 1" pull pipe. (See chart for length). Assemble support bar, pull pipe, and pitless body. Be sure that arrow on support bar and discharge hole on pitless body are in line with each other.
2. Cut a piece of 1/2" pipe 3" longer than pull pipe and flatten one end to fit stainless steel screw or weld on adjustment tool to one end of 1/2" pipe.
3. Measure distance from bottom of support bar to center of discharge hub, or **use assembly as a measuring stick**.
4. Drill hole in casing, the same measured distance as above:
 - 4" casing - 1-1/4" hole or smaller
 - 5" casing - 1-1/4" hole or smaller
 - 6" casing - 1-1/4" hole or smaller

NOTE: For 2" WMCK model - 2" hole or smaller

5. Notch or mark top of casing directly above discharge hole.
6. Clamp discharge hub around casing to assure watertight seal around discharge hole.
7. Attach pump and drop pipe to pitless body, apply **Anti-Seize/Gasket Lube** to O-ring, and lower into casing.
8. Line up mark on support bar with notch cut in casing.
9. Turn stainless steel screw clockwise until O-ring seals on inner wall of casing.
10. Complete installation by installing watertight or ventilated cap on top of well casing, depending on state well code.

WMCK or WSMCK Pitless Kit is now installed.

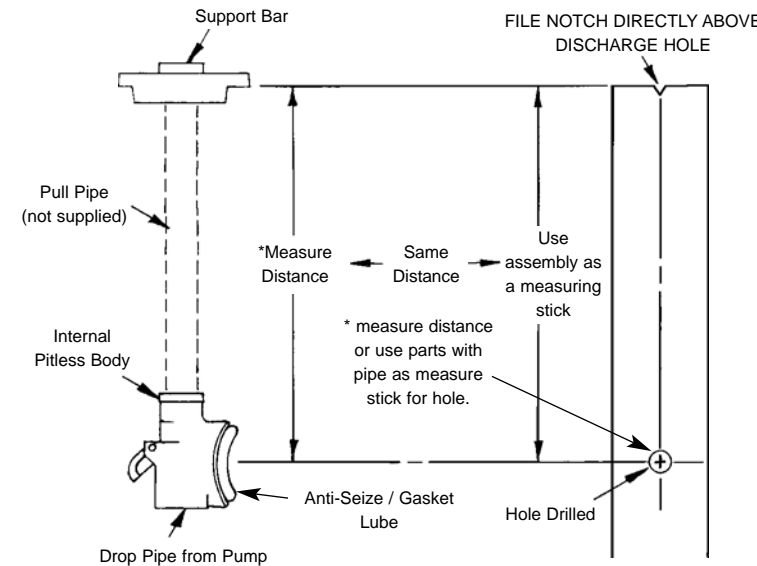
NOTE: When pulling pump or installing pump, make sure that the stainless steel screw on pitless body is turned (counter-clockwise) so the lever can be pushed in as far as necessary.

| Pull Pipe Length | Desired Bury Depth |
|------------------|--------------------|
| 22" | 1' |
| 34" | 2' |
| 46" | 3' |
| 58" | 4' |
| 70" | 5' |
| 82" | 6' |
| 94" | 7' |
| 106" | 8' |



Installation tool available at no charge to help make installation very easy.

Part No. WMCKADJTOOL



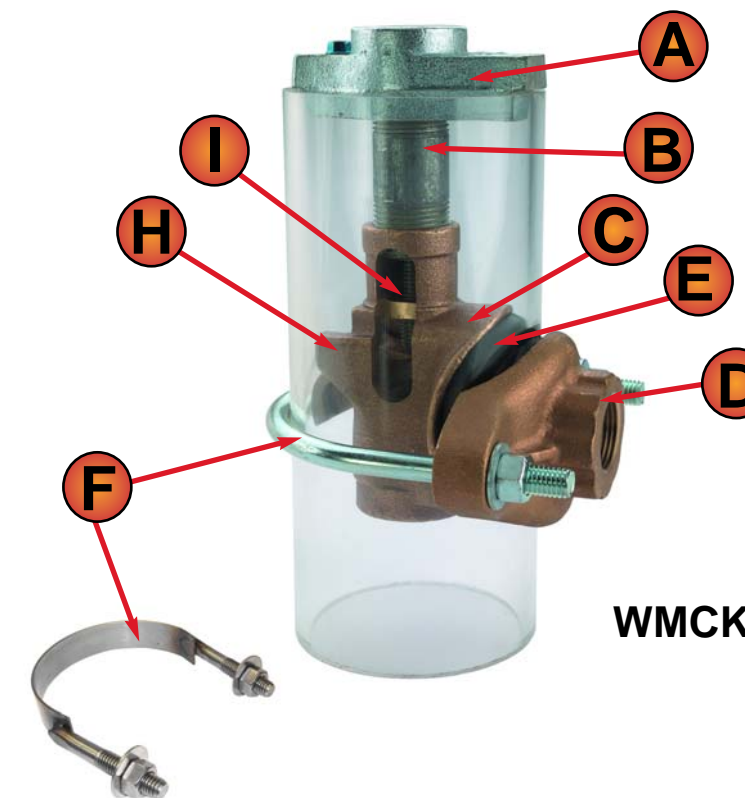
Parts List - WMCK

| Parts Description | Red Brass WMCK Flipper Series | | | Red Brass WMCK Wedge Series | |
|---------------------------------|-------------------------------|-------------|-------------|-----------------------------|-------------|
| | 4" Part No. | 5" Part No. | 6" Part No. | 5" Part No. | 6" Part No. |
| Support Bar | WMCK4SB | WMCK5SB | WMCK6SB | WMCK5SB | WMCK6SB |
| Screw - Stainless Steel | WMCKSS | WMCKSS | WMCKSS | WMCKSS | WMCKSS |
| Internal Pitless Body - 1" | WMCKB410 | WMCKB510 | WMCKB610 | | |
| Internal Pitless Body - 1-1/4" | WMCKB414 | WMCKB514 | WMCKB614 | | |
| Internal Pitless Body - 2" | | | | WMCKB520 | WMCKB620 |
| Flipper | WMCKF400 | WMCKF500 | WMCKF600 | | |
| Pivot Pin - Stainless Steel | WMCKPP | WMCKPP | WMCKPP | WMCKPP | WMCKPP |
| Wedge - 2" | | | | WMCKW520 | WMCKW620 |
| Screw - Wedge | | | | WMCKWSW | WMCKWSW |
| Discharge Hub w/O-Ring - 1" | WMCKH410 | WMCKH510 | WMCKH610 | | |
| Discharge Hub w/O-Ring - 1-1/4" | WMCKH414 | WMCKH514 | WMCKH614 | | |
| Discharge Hub w/O-Ring - 2" | | | | WMCKH520 | WMCKH620 |
| O-Ring Seal | WMCKOR | WMCKOR | WMCKOR | WMCKOR | WMCKOR |
| U-Bolts w/Nuts | WMCK4UB | WMCK5UB | WMCK6UB | WMCK5UB | WMCK6UB |
| Back Strap | W424 | W424 | W424 | W424 | W424 |
| Stainless Steel U Strap w/Nuts | WUS4SS | WUS5SS | WUS6SS | WUS5SS | WUS6SS |

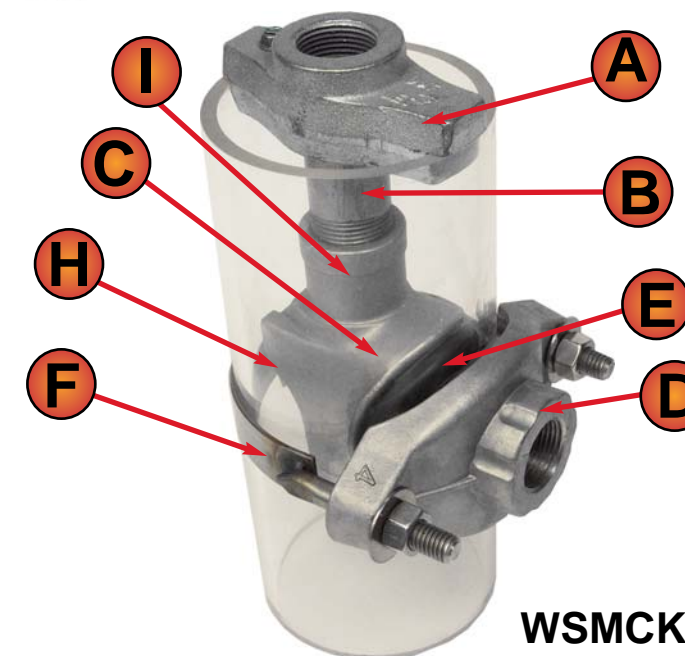
Parts List - WSMCK

| Parts Description | Stainless Steel WSMCK Flipper Series | | |
|--------------------------------------|--------------------------------------|-------------|-------------|
| | 4" Part No. | 5" Part No. | 6" Part No. |
| Support Bar | WMCK4SB | WMCK5SB | WMCK6SB |
| Screw - Stainless Steel | WSMCKSS | WSMCKSS | WSMCKSS |
| Internal Pitless Body - 1" S.S. | WSMCKB410 | WSMCKB510 | WSMCKB610 |
| Internal Pitless Body - 1-1/4" S.S. | WSMCKB414 | WSMCKB514 | WSMCKB614 |
| Flipper - Stainless Steel | WSMCKF400 | WSMCKF500 | WSMCKF600 |
| Pivot Pin - Stainless Steel | WMCKPP | WMCKPP | WMCKPP |
| Discharge Hub w/O-Ring - 1" S.S. | WSMCKH410 | WSMCKH510 | WSMCKH610 |
| Discharge Hub w/O-Ring - 1-1/4" S.S. | WSMCKH414 | WSMCKH514 | WSMCKH614 |
| O-Ring Seal | WMCKOR | WMCKOR | WMCKOR |
| Stainless Steel U-Strap w/Nuts | WUS4SS | WUS5SS | WUS6SS |

Certified By



WMCK



WSMCK



QUALITY BENEFITS

- A** Support Bar
- B** Pull Pipe
- C** Pitless Body
- D** Discharge Hub
- E** O-Ring Seal
- F** U-Bolt or Stainless Steel U-Strap
- G** Back Strap (Not Shown)
- H** Stainless Steel Pivot Pin
- I** Stainless Steel Screw (Inside)

WMCK & WSMCK Pitless KITS



WMCK & WSMCK Pitless KITS

WMCK & WSMCK Pitless Kits

WMCK410 / WMCK414 Kit



WSMCK410 / WSMCK414 Kit



WMCK510 / WMCK514 Kit



WSMCK510 / WSMCK514 Kit



WMCK520 / WMCK620 Kit



WMCK & WSMCK Pitless Kit are Certified

Order Number Breakdown

| Product I.D. | Optional | Well Size | Drop/Discharge | Optional |
|--------------------------------|----------------|------------------------|--------------------------------|--|
| WMCK - Well Pro Clear Well Kit | S - Back Strap | 4 - For 4" I.D. Casing | 10 - For 1" Drop and Discharge | S - Stainless Steel U-Strap replace U-Bolt |

WMCK Brass Pitless Kits

| Order No. | UPC Bar Code (Qty. 1) | Drop Pipe & Discharge | Hole Saw | Material | Well Size I.D./O.D. | Approx. Wt./Lbs. |
|-----------|-----------------------|-----------------------|----------|----------|---------------------|------------------|
|-----------|-----------------------|-----------------------|----------|----------|---------------------|------------------|

| WMCK Pitless Kits | | | | | | |
|-------------------|-----------------|--------|--------|-----------|-----------|------|
| WMCK410 | 6 42367 08065 5 | 1" | 1" | Red Brass | 4.0"/4.5" | 8.9 |
| WMCK414 | 6 42367 08066 2 | 1-1/4" | 1-1/4" | Red Brass | 4.0"/4.5" | 8.4 |
| WMCK510 | 6 42367 08067 9 | 1" | 1" | Red Brass | 5.0"/5.6" | 10.3 |
| WMCK514 | 6 42367 08068 6 | 1-1/4" | 1-1/4" | Red Brass | 5.0"/5.6" | 10.1 |
| WMCK520 | 6 42367 08069 3 | 2" | 2" | Red Brass | 5.0"/5.6" | 13.7 |
| WMCK610 | 6 42367 08070 9 | 1" | 1" | Red Brass | 6.0"/6.6" | 11.6 |
| WMCK614 | 6 42367 08071 6 | 1-1/4" | 1-1/4" | Red Brass | 6.0"/6.6" | 10.7 |
| WMCK620 | 6 42367 08072 3 | 2" | 2" | Red Brass | 6.0"/6.6" | 14.9 |

| WMCK Pitless Kits with Back Strap on U-Bolt | | | | | | |
|---|-----------------|--------|--------|-----------|-----------|------|
| WMCKS410 | 6 42367 08073 0 | 1" | 1" | Red Brass | 4.0"/4.5" | 8.7 |
| WMCKS414 | 6 42367 08074 7 | 1-1/4" | 1-1/4" | Red Brass | 4.0"/4.5" | 8.2 |
| WMCKS510 | 6 42367 08075 4 | 1" | 1" | Red Brass | 5.0"/5.6" | 10.1 |
| WMCKS514 | 6 42367 08076 1 | 1-1/4" | 1-1/4" | Red Brass | 5.0"/5.6" | 9.8 |
| WMCKS520 | 6 42367 08077 8 | 2" | 2" | Red Brass | 5.0"/5.6" | 14.2 |
| WMCKS610 | 6 42367 08078 5 | 1" | 1" | Red Brass | 6.0"/6.6" | 11.9 |
| WMCKS614 | 6 42367 08079 2 | 1-1/4" | 1-1/4" | Red Brass | 6.0"/6.6" | 11.0 |
| WMCKS620 | 6 42367 08080 8 | 2" | 2" | Red Brass | 6.0"/6.6" | 15.4 |

| WMCK Pitless Kits with Stainless Steel Strap, Nuts, & Washers | | | | | | |
|---|-----------------|--------|--------|-----------|-----------|------|
| WMCKS410S | 6 42367 11671 2 | 1" | 1" | Red Brass | 4.0"/4.5" | 9.0 |
| WMCKS414S | 6 42367 11672 9 | 1-1/4" | 1-1/4" | Red Brass | 4.0"/4.5" | 8.4 |
| WMCKS510S | 6 42367 11673 6 | 1" | 1" | Red Brass | 5.0"/5.6" | 10.3 |
| WMCKS514S | 6 42367 11674 3 | 1-1/4" | 1-1/4" | Red Brass | 5.0"/5.6" | 10.1 |
| WMCKS520S | 6 42367 12233 1 | 2" | 2" | Red Brass | 5.0"/5.6" | 9.4 |
| WMCKS610S | 6 42367 11675 0 | 1" | 1" | Red Brass | 6.0"/6.6" | 11.7 |
| WMCKS614S | 6 42367 12234 8 | 1-1/4" | 1-1/4" | Red Brass | 6.0"/6.6" | 10.0 |
| WMCKS620S | 6 42367 12235 5 | 2" | 2" | Red Brass | 6.0"/6.6" | 10.5 |

Note: All Pitless Kits listed above have passed the Pitless Adapter Standard PAS-1, PAS-2, PAS-97(04), and Illinois code. Note: Call Well Pro for any questions on weight limits for WMCK Pitless Kits.

Order Number Breakdown

| Product I.D. | Standard | Product I.D. | Drop/Discharge |
|---------------------------------|----------|------------------------|--------------------------------|
| WSMCK - Well Pro Clear Well Kit | U-Strap | 4 - For 4" I.D. Casing | 10 - For 1" Drop and Discharge |

WSMCK Stainless Steel Pitless Kits

| Order No. | UPC Bar Code (Qty. 1) | Drop Pipe & Discharge | Hole Saw | Material | Well Size I.D./O.D. | Approx. Wt./Lbs. |
|-----------|-----------------------|-----------------------|----------|----------|---------------------|------------------|
|-----------|-----------------------|-----------------------|----------|----------|---------------------|------------------|

| | | | | | | |
|----------|-----------------|--------|--------|-----------------|-----------|------|
| WSMCK410 | 6 42367 08638 1 | 1" | 1" | Stainless Steel | 4.0"/4.5" | 7.7 |
| WSMCK414 | 6 42367 08640 4 | 1-1/4" | 1-1/4" | Stainless Steel | 4.0"/4.5" | 7.5 |
| WSMCK510 | 6 42367 08642 8 | 1" | 1" | Stainless Steel | 5.0"/5.6" | 9.3 |
| WSMCK514 | 6 42367 08644 2 | 1-1/4" | 1-1/4" | Stainless Steel | 5.0"/5.6" | 8.9 |
| WSMCK610 | 6 42367 08646 6 | 1" | 1" | Stainless Steel | 6.0"/6.6" | 11.1 |
| WSMCK614 | 6 42367 08648 0 | 1-1/4" | 1-1/4" | Stainless Steel | 6.0"/6.6" | 10.3 |

Note: All Pitless Kits listed above have passed the Pitless Adapter Standard PAS-1, PAS-2, PAS-97(04), and Illinois code. Note: Call Well Pro for any questions on weight limits for WSMCK Pitless Kits.

WMCK610 / WMCK614 Kit



WSMCK610 / WSMCK614 Kit



All Well Pro Watertight Caps are Certified

Well Cap Models

NOTE: Well caps may be ordered to go along with WMCK & WSMCK Pitless Kits to top off your well casing and ensure a sanitary seal.



WWC Series Watertight Cap with 1" Conduit Tap



WWCB Series Watertight Cap with 1-1/2" Conduit Tap



WWCI Series Watertight Cap (for 6" only) with 1" Conduit Tap



WVC Series Vent Cap with 1" Conduit



WWCO Series Watertight Cap with 1" Conduit Tap



WWCP Cap



WW COP Series Watertight Cap with 1" Conduit Tap

WMCK & WSMCK PITLESS KITS

WMCK



Support Bar

WSMCK



Support Bar

WMCK



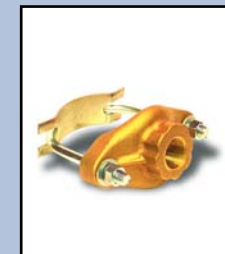
Pitless Body

WSMCK



Pitless Body

WMCK



Discharge Hub and U-Bolt Plus Backstrap

WSMCK



Discharge Hub Plus Stainless Steel U-Strap

WMCK



Optional Stainless Steel U-Strap

WSMCK



Stainless Steel U-Strap