



PRESSURE GAUGES

Pressure Gauges
Pressure gauges are suitable for water, air, steam, and other pressure applications that will not deteriorate brass.



WSTGA25



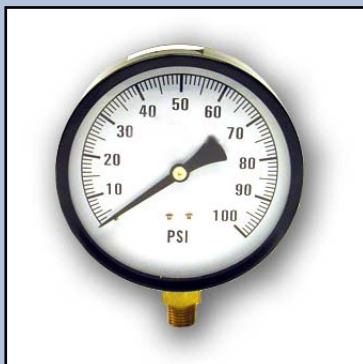
WPG30



WPG200



WPG25200



WPG4100

Quality Gauges

Individually Boxed

Swivel Test Gauge Adapter

Order Number	UPC Bar Code (Qty. 1)	Connection	Wt. Each Lbs.
WSTGA25	6 42367 11677 4	1/4" NPT Brass	.10

Air Test Gauge

Order Number	UPC Bar Code (Qty. 1)	Dial Size Inches	Pressure Range	Connection	Wt. Each Lbs.
WPGAT100	6 42367 12222 5	2"	0-100 psi	Air Valve Inlet	.30
(Steel Case)					

Pressure Gauges

Order Number	UPC Bar Code (Qty. 1)	Dial Size Inches	Pressure Range	Connection	Wt. Each Lbs.
WPGP100	6 42367 08662 6	2"	0-100 psi	1/4" NPT Brass (Lower Male)	.18
(Plastic Case)					
WPGP200	6 42367 10461 0	2"	0-200 psi	1/4" NPT Brass (Lower Male)	.18
(Plastic Case)					
WPGP100P	6 42367 08663 3	2"	0-100 psi	1/4" NPT Brass (Lower Male)	.18
(Plastic Case) (Plain Dial)					
WPG100	6 42367 07875 1	2"	0-100 psi	1/4" NPT Brass (Lower Male)	.22
(Steel Case)					
WPG100P	6 42367 08664 0	2"	0-100 psi	1/4" NPT Brass (Lower Male)	.22
(Steel Case) (Plain Dial)					
* WPGB100	6 42367 07877 5	2"	0-100 psi	1/8" NPT Brass (Back Mount)	.24
(Steel Case)					
* WPGB10025	6 42367 10681 2	2"	0-100 psi	1/4" NPT Brass (Back Mount)	.24
(Steel Case)					
* WPGB15160	6 42367 11427 5	1-1/2"	0-160 psi	1/8" NPT Brass (Back Mount)	.14
(Steel Case)					
WPG15	6 42367 12223 2	2"	0-15 psi	1/4" NPT Brass (Lower Male)	.24
(Steel case)					
WPG30	6 42367 07873 7	2"	0-30 psi	1/4" NPT Brass (Lower Male)	.24
(Steel Case)					
WPG60	6 42367 07874 4	2"	0-60 psi	1/4" NPT Brass (Lower Male)	.22
(Steel Case)					
WPG160	6 42367 08665 7	2"	0-160 psi	1/4" NPT Brass (Lower Male)	.24
(Steel Case)					
WPG200	6 42367 07876 8	2"	0-200 psi	1/4" NPT Brass (Lower Male)	.22
(Steel Case)					
WPG200P	6 42367 10462 7	2"	0-200 psi	1/4" NPT Brass (Lower Male)	.22
(Steel Case) (Plain Dial)					
● WPGC150	6 42367 08666 4	2"	0-150 psi	1/4" NPT Brass (Lower Male)	.26
(Steel Case)					
0-30 in. Vac.					

● (compound gauge vacuum and pressure)

* Back Mount Model

Pressure Gauges - Large Diameter

Order Number	UPC Bar Code (Qty. 1)	Dial Size Inches	Pressure Range	Connection	Wt. Each Lbs.
WPG2560	6 42367 08667 1	2-1/2"	0-60 psi	1/4" NPT Brass (Lower Male)	.34
(Steel Case)					
WPG25100	6 42367 08668 8	2-1/2"	0-100 psi	1/4" NPT Brass (Lower Male)	.34
(Steel Case)					
WPG25200	6 42367 08669 5	2-1/2"	0-200 psi	1/4" NPT Brass (Lower Male)	.34
(Steel Case)					
WPG460	6 42367 08670 1	4"	0-60 psi	1/4" NPT Brass (Lower Male)	.66
(Steel Case)					
WPG4100	6 42367 08671 8	4"	0-100 psi	1/4" NPT Brass (Lower Male)	.66
(Steel Case)					





PRESSURE GAUGES

Pressure Gauges

Liquid Filled - for resistance to corrosive atmosphere, vibration, and pulsation dampening.

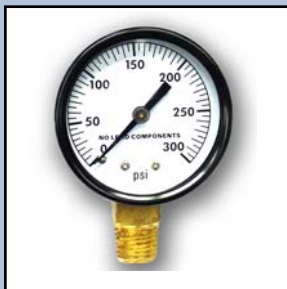
Liquid Filled - have a temperature range of -5°F to 140°F



WPGL2560



WPGLB100



WPGNL300



WPGNL200

Pressure Gauges - Liquid Filled

Order Number	UPC Bar Code (Qty. 1)	Dial Size Inches	Pressure Range	Connection	Wt. Each Lbs.
= WPGL100	6 42367 10463 4	2"	0-100 psi	1/4" NPT Brass	.30
		(Steel Case)		(Lower Male)	
= WPGL2530	6 42367 11428 2	2-1/2"	0-30 psi	1/4" NPT Brass	.42
		(300 Series Stainless Steel Case)		(Lower Male)	
= WPGL2560	6 42367 08672 5	2-1/2"	0-60 psi	1/4" NPT Brass	.42
		(300 Series Stainless Steel Case)		(Lower Male)	
= WPGL25100	6 42367 08673 2	2-1/2"	0-100 psi	1/4" NPT Brass	.42
		(300 Series Stainless Steel Case)		(Lower Male)	
= WPGL25160	6 42367 10464 1	2-1/2"	0-160 psi	1/4" NPT Brass	.42
		(300 Series Stainless Steel Case)		(Lower Male)	
= WPGL25200	6 42367 10465 8	2-1/2"	0-200 psi	1/4" NPT Brass	.42
		(300 Series Stainless Steel Case)		(Lower Male)	
= WPGL25300	6 42367 10466 5	2-1/2"	0-300 psi	1/4" NPT Brass	.42
		(300 Series Stainless Steel Case)		(Lower Male)	
* WPGLB100	6 42367 10467 2	2"	0-100 psi	1/4" NPT Brass	.30
		(Steel Case)		(Back Mount)	
* WPGLB25100	6 42367 10468 9	2-1/2"	0-100 psi	1/4" NPT Brass	.40
		(300 Series Stainless Steel Case)		(Back Mount)	
* WPGLB25200	6 42367 10469 6	2-1/2"	0-200 psi	1/4" NPT Brass	.45
		(300 Series Stainless Steel Case)		(Back Mount)	
* WPGLB25300	6 42367 10470 2	2-1/2"	0-300 psi	1/4" NPT Brass	.42
		(300 Series Stainless Steel Case)		(Back Mount)	
* WPGLB25400	6 42367 11429 9	2-1/2"	0-400 psi	1/4" NPT Brass	.42
		(300 Series Stainless Steel Case)		(Back Mount)	
* WPGLB252000	6 42367 11430 5	2-1/2"	0-2000 psi	1/4" NPT Brass	.45
		(300 Series Stainless Steel Case)		(Back Mount)	

Pressure Gauges - No Lead Standard



Order Number	UPC Bar Code (Qty. 1)	Dial Size Inches	Pressure Range	Connection	Wt. Each Lbs.
WPGNL60	6 42367 10833 5	2"	0-60 psi	1/4" NPT Brass	.20
		(Steel Case)		(Lower Male)	
WPGNL100	6 42367 10471 9	2"	0-100 psi	1/4" NPT Brass	.22
		(Steel Case)		(Lower Male)	
WPGNL200	6 42367 10472 6	2"	0-200 psi	1/4" NPT Brass	.22
		(Steel Case)		(Lower Male)	
WPGNL300	6 42367 10839 7	2"	0-300 psi	1/4" NPT Brass	.40
		(Steel Case)		(Lower Male)	

Pressure Gauges - No Lead Liquid Filled



Order Number	UPC Bar Code (Qty. 1)	Dial Size Inches	Pressure Range	Connection	Wt. Each Lbs.
= WPGNLN100	6 42367 10473 3	2-1/2"	0-100 psi	1/4" NPT Brass	.42
		(300 Series Stainless Steel Case)		(Lower Male)	
= WPGNLN160	6 42367 10474 0	2-1/2"	0-160 psi	1/4" NPT Brass	.42
		(300 Series Stainless Steel Case)		(Lower Male)	
= WPGNLN200	6 42367 10475 7	2-1/2"	0-200 psi	1/4" NPT Brass	.42
		(300 Series Stainless Steel Case)		(Lower Male)	
= WPGNLN300	6 42367 10476 4	2-1/2"	0-300 psi	1/4" NPT Brass	.42
		(300 Series Stainless Steel Case)		(Lower Male)	

* Back Mount Model

= Install in vertical position only

	CONTACT INFO: Main/International:(712) 732-7354 U.S. and Iowa:(877) 888-7059 Fax:(712) 732-7568 Fax:(800) 269-3569
--	--